



**Joint Session with SPE
Radisson - Green Tree
15 January 2009**

Sedimentological Studies from the Dominion-WVU Co-Op Program with Examples from the Murrysville, Bradford and Weir

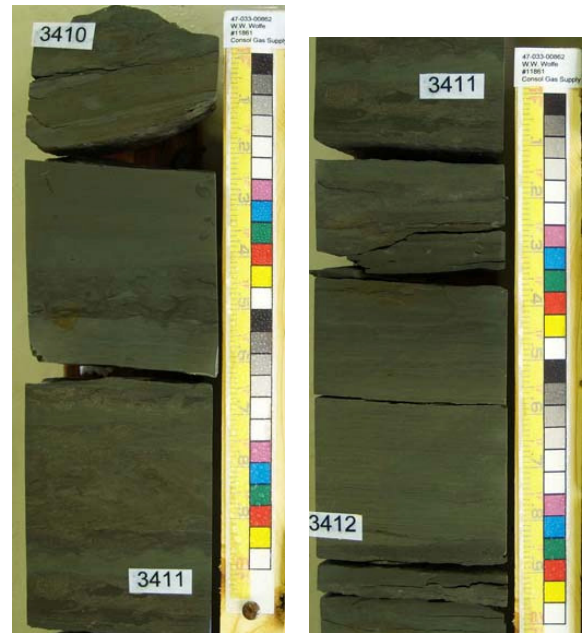
Richard Smosna and Kathy R. Bruner
Department of Geology & Geography
West Virginia University

presented by

Richard Smosna
West Virginia University

Abstract:

In recent years West Virginia University and Dominion Exploration and Production Inc. have developed an informal program centered on summer interns. Graduate students in geology are employed by Dominion as interns working on a regional exploration project under the guidance of a company mentor. With well logs, cores, cuttings, and thin sections, interns assess the petroleum potential of a selected stratigraphic interval within a small study area. Using Geographix software, they prepare isopach and structure maps, stratigraphic and structural cross sections, and net-pay maps, all aimed at identifying prospects—both geographic and stratigraphic—for further consideration. This talk will present selected examples of student projects including: (1) an incised fluvial system of the Murrysville Sandstone, (2) a primarily deep-water stratigraphic sequence in the Bradford Group, and (3) a tight-siltstone facies of the Weir Zone. Students present their results to the company's staff at the end of the internship, and they



Bradford Core Slabs

Courtesy WVGES

submit the research to West Virginia University as their thesis. The interns, of course, gain a wealth of experience related to the petroleum industry, and Dominion acquires some extra hands in exploration and development. Most of these MS students now work as petroleum geologists with Dominion, attesting to the success of our co-op program.



For reservations to this informative and entertaining evening, please complete the attached reservation form.

WHAT IS THE PAPG?

PAPG is a non-profit organization founded in 1984 to provide a forum for Petroleum Geologists in the Pittsburgh Area to meet socially and discuss technical topics relative to the exploration and development of reserves in the Northern and Central Appalachian Basin. PAPG is an affiliated association with AAPG (American Association of Petroleum Geologists) and has representation in the House of Delegates. Educational opportunities are provided via field trips, seminars and AAPG Sectional meetings, sponsored solely by PAPG or in conjunction with the PTTC (Petroleum Technology Transfer Council), PGS (Pittsburgh Geologic Society) and SPE (Society of Petroleum Engineers).

Although PAPG is predominately a geologic organization, numerous industry professionals including geophysicists, engineers, lawyers and landmen are among PAPG's members and find the interaction at meetings and educational opportunities beneficial to their professions. PAPG also encourages student membership and participation.

Meetings are typically held monthly from September through May in locations within 50 miles of downtown Pittsburgh. From time to time, meetings are held in conjunction with SPE and PGS.

NEWS AND EVENTS

PAPG Website: Visit the website at <http://www.PAPGrocks.org>.



The 2008 AAPG Eastern Section Meeting Abstracts, Presentations, Posters and Field Guide are now available on the PAPG Website.

Visit PAPGrocks.org and go to the Publications Section.

Mark your calendar now for these upcoming events:

February 19th 2009, Pittsburgh PA

February PAPG Meeting
Connie Jump - Bakken Shale

March 2009, Pittsburgh PA

March PAPG Meeting
Susan Humphris - AAPG Dist Lecturer - Relationship Between Volcanism, Tectonism and Hydrothermal Activity Along the Mid Ocean Ridge System.

April 1st 2009, Pittsburgh PA

PAPG Hockey Night
Penguins vs NJ Devils - Mellon Arena see below for details

April 15th 2009, Pittsburgh PA

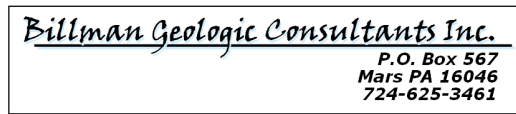
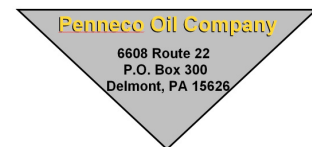
April PAPG Meeting
Nathan Bennett - History and Future of Oil and Gas Drilling in the PA State Forest System.

Have information you want to share with the organization?

Please contact the secretary to add the information to the next newsletter.

SPONSORS

The PAPG wishes to thank the companies who have contributed to the PAPG 2008-09 season.



Sponsor Information

If you or your company would like to sponsor the PAPG and help support the continuation of our Meetings, Field Trips, and other events, we ask that you send a donation to the PAPG. Any contribution of \$100.00 or more by any group or individual will be recognized on our website, in the monthly newsletter, and at scheduled monthly meetings.

We ask that you show your support for the PAPG by a contribution and your continuing attendance at the monthly meetings.

We appreciate your continued support.

Contributions may be sent to: PAPG, PO BOX 16352, GREENTREE PA 15242-0352

CONTACT THE PAPG

PAPG Officers:

- President:** **Jim Pancake** --Equitable Production Co.
Phone: 412-395-3912
Email: jpancake@eqt.com
- Vice President:** **Eric Ober** -- Texas Keystone, Inc.
Phone: 412-388-0917
Email: eober@texaskeystone.com
- Secretary:** **Dave Boyer** -- Texas Keystone, Inc.
Phone: 412-434-5616
Email: dboyer@texaskeystone.com
- Treasurer:** **Tracee Imai**-- Schlumberger DCS.
Phone: 412-787-5403
Email: timai@slb.com
- AAPG Delegate:** **Doug Patchen** – Petroleum Technology Transfer Council
Phone: 304-293-2867 ext 5443
Email: doug.patchen@mail.wvu.edu

PAPG 2008-2009 DUES

PAPG dues for the 2008-2009 season are now DUE!

*The membership form is attached to this newsletter. Please fill the form out **completely** so that we can ensure that we have your latest contact information. We are planning to publish a membership directory this year and your updated information is crucial.*

NOTICE OF JANUARY 2009 MEETING PITTSBURGH ASSOCIATION OF PETROLEUM GEOLOGISTS

DATE: Thursday 15, January 2009

PLACE: Radisson Hotel - Greentree
101 Radisson Drive, Pittsburgh, PA 15220
412-922-8400

TIME: 5:00 PM – Social Hour (w/ Cash Bar)
6:00 PM – Dinner
7:00 PM – Speaker

TOPIC: “Sedimentological Studies from the Dominion-WVU Co-Op Program with Examples from the Murrysville, Bradford and Weir

SPEAKER: Richard Smosna - West Virginia University

COST: \$30.00
\$10.00 Students
(Checks payable to SPE)

DINNER OPTIONS: Romano Battered Orange Roughy
or
Chicken Milanese

RESERVATIONS: Call, email, fax, or mail this reservation form by January 12, 2009 to:

Barbara A. Purks
412-787-5403 (phone)
412-787-2906 (fax)
bpurks@pittsburgh.oilfield.slb.com

NAME(S) _____

COMPANY

DINNER CHOICE(S)

Pittsburgh Association of Petroleum Geologists



Night with the
Pittsburgh Penguins

Wednesday, April 1st
vs. the NJ Devils



PAPG has scored tickets to a Penguins game. The entire season is almost already sold out!!! We have 30 C-level seats for our night out. The cost per tickets is \$52.50 for members. That's half price!! Non-members will be charged \$105.00 per seat. For members or non-members, it is a two ticket limit. Seats are on a first reserved ... first served basis.

For more information or to buy tickets contact ...

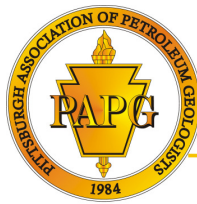
Jim Pancake at ...

Email: jpancake@egt.com

Phone: 412-395-3912

Equitable Resources
225 North Shore Drive
Pittsburgh, PA 15212





P·A·P·G

Pittsburgh Association of
Petroleum Geologists

An AAPG Affiliated Society

www.papgrocks.org

APPLICATION FOR MEMBERSHIP AND MEMBERSHIP RENEWAL

PLEASE INDICATE YOUR MEMBERSHIP STATUS BY CHECKING THE APPROPRIATE BOX:

PROFESSIONAL - RENEWAL

STUDENT - RENEWAL

PROFESSIONAL – NEW MEMBERSHIP

STUDENT - NEW MEMBERSHIP

The **PITTSBURGH ASSOCIATION OF PETROLEUM GEOLOGISTS** membership year runs from JUNE 1 through MAY 31. Monthly meetings are usually held the second Thursday of the month from September through May.

Professional Dues are \$25.00 per year

Student Dues are \$10.00 per year

NEW APPLICATION: If you have never been a member of PAPG, please fill out the remainder of the form, obtain the signatures of two members to sponsor you, and mail check, payable to PAPG, to the address below.

RENEWAL: Please fill out the mailing address/directory information below if your contact information has changed and submit dues, payable to PAPG, to the address below.

Mail completed form and dues payment (checks only - Payable to PAPG) to:

Dave Boyer
Texas Keystone, Inc.
560 Epsilon Drive
Pittsburgh, PA 15238

MAILING ADDRESS / DIRECTORY INFORMATION – PLEASE COMPLETE ALL INFORMATION

NAME _____ DATE _____

COMPANY / UNIVERSITY _____

ADDRESS _____

CITY _____ STATE _____ ZIP _____

JOB TITLE: _____

EMAIL: _____ **Please fill this in – help us save those mailing costs!**

PHONE: () _____ - _____

FAX: () _____ - _____

WOULD YOU BE INTERESTED IN PAPG PARTICIPATION?: Officer Speaker

**WOULD YOU LIKE YOUR CONTACT INFORMATION PLACED
IN THE MEMBERSHIP DIRECTORY (available to members only?)** Yes No

TWO SPONSORS REQUIRED for NEW MEMBERS

Name _____ Date _____

Name _____ Date _____